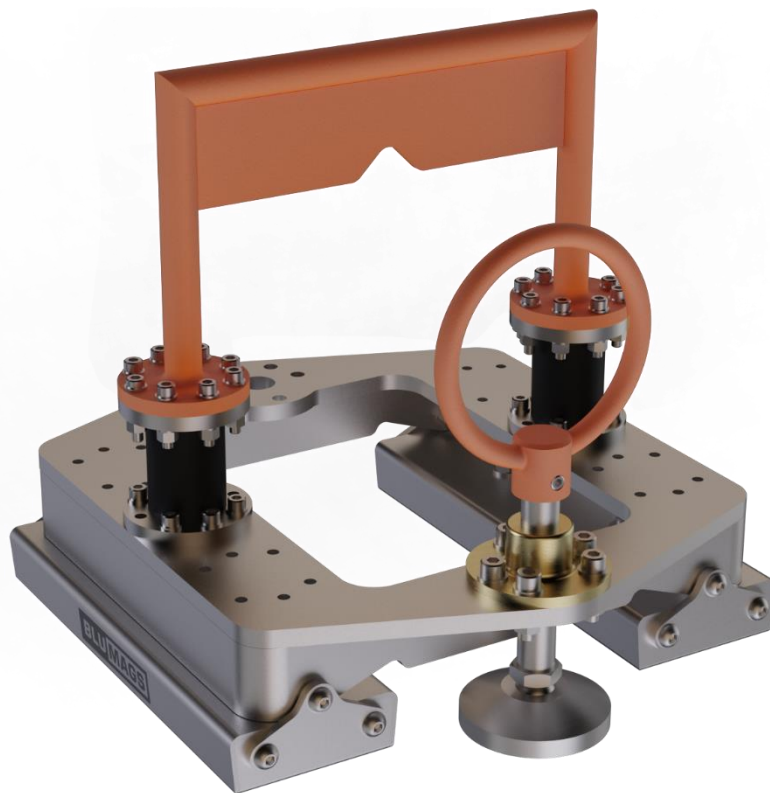


BLUMAGS

MOBY

3200 kg | 7000 lbs



USER MANUAL

SAFETY

Always keep a safe distance between the magnet and the following equipment:

Pacemakers or other electronic life-sustaining equipment	2 m / 7 feet
Other magnets	400 mm / 16 inches
Steel surfaces and tools (except when intentional)	
Sensitive electronic and magnetic equipment such as phones, compasses, stripe cards and hard drives	

When applying the magnet (whether by hand or from an ROV), keep the release screw in its extended position to reduce the force of impact when it meets a steel surface. Do not put your fingers under the magnet.

Be aware that the magnetic holding force may be reduced due to corrosion, paint, uneven steel surfaces, marine growth, steel thicknesses, alloy type and pulling angle.

Do not suspend yourself from the magnet or in any other way put yourself in danger should the magnet lose its grip. Likewise, refrain from suspending objects that may cause injury or damage if the magnet is unable to maintain its hold.

Disclaimer

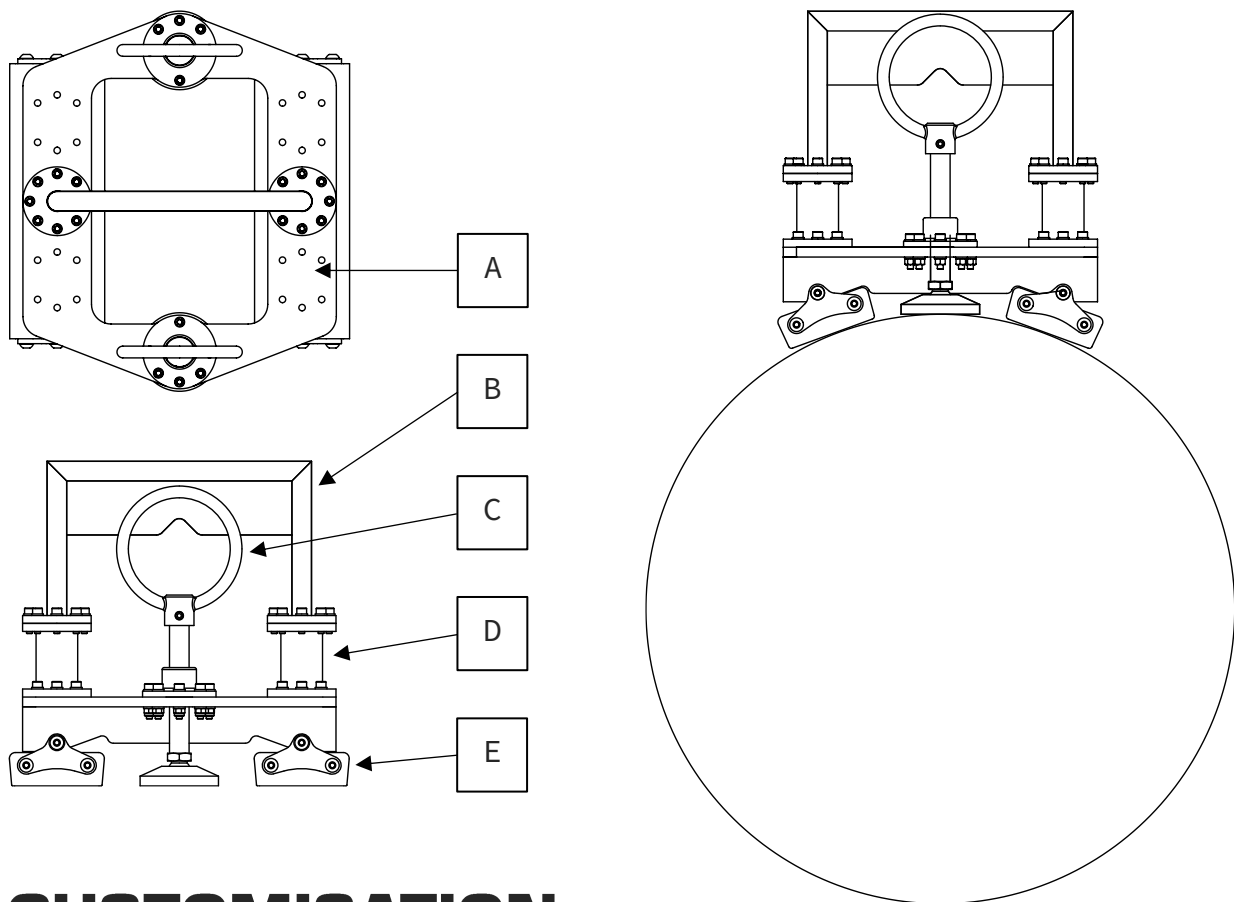
Under no circumstances will Blumags / Apex Technology AS be held responsible or liable in any way for any claims, damages, losses, expenses, costs or liabilities whatsoever (including, without limitation, any direct or indirect damages for loss of profits or business interruption) resulting or arising directly or indirectly from your use of or inability to use this product.

OPERATION

The grip bar (B) is the primary interface for the ROV, intended as an anchoring point or for holding the magnet. The two flex joints (D) are intended to reduce the forces transferred to the ROV.

The magnet can be fitted with two release screws (C). Only one is needed for operation. When applying the magnet on a steel surface, keep the release screw(s) in the extended position to reduce the force of impact, then turn the screw(s) anti-clockwise until the magnetic modules (E) are in full contact with the surface. The magnet is released by turning the release screw(s) clockwise.

The magnetic modules are hinged, allowing Moby to be attached to a tubular element.



CUSTOMISATION

The tool plate (A) has several holes which can be used to attach custom equipment on the magnet. Refer to the Technical Specification for dimensions, available for download at www.blumags.com/pages/moby.

STORAGE, PRESERVATION & SHIPPING

The magnet is shipped with a keeper plate attached to the magnetic modules. With the keeper plate, the magnet can be safely shipped by air without restrictions (in accordance with IATA packing instruction 953).

The keeper plate can be kept on the magnet outside the carrying case. This will prevent the magnet from attracting metal objects or unintentionally attaching itself to metal surfaces before launching into the sea.

Clean the magnet with fresh water and dry it after each use. Dust and dirt may be difficult to brush off from the magnetic surfaces but can be easily removed with pressurized air. Otherwise, use a wet cloth.

Inspect the flex joints for damage after use. The rubber might get damaged if subjected to excessive bending. Due to the metal parts inside, they will not break off entirely.

Store the magnet in the carrying case.

Contact Blumags if you need to replace the flex joints or any other parts.



Blumags by Apex Technology AS
Oslo, Norway
Org. No. 924 362 170
hi@blumags.com
www.blumags.com